



LIFTING CAPACITY

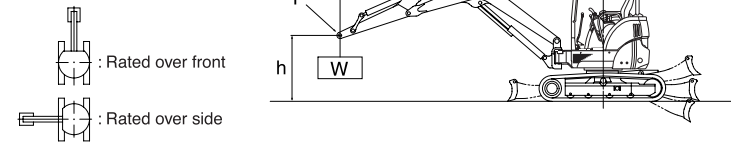
Excavator equipped with ROPS/FOPS canopy, rubber crawlers.

r: Reach from swing center line : ft-in(mm)

h: Lift point height : ft-in(mm)

w: Lifting capacity : lbs(kg)

P: Load point



- The rated lifting capacities that are indicated below are based on ISO 10567 and do not exceed 87% of the excavator's hydraulic lifting capacity or 75% of its static tilt load (tipping load) capacity.
- The following operating criteria are also applicable to the calculation of these maximum loads;
 - The "load point" is the location of the front bolt on the arm.
 - The three indicated machine positions are :
 - arm over the front end (blade down),
 - arm over the front end (blade up), and
 - arm over the side (blade up).
 - The operating cylinder is the boom cylinder.
- The weight of the excavator's bucket, hook, sling and other lifting accessories have been taken into consideration when calculating these maximum loads.

ViO15-2A

LIFT POINT HEIGHT	r: REACH ft-in (mm)				r: REACH ft-in (mm)				r: REACH ft-in (mm)			
h:ft-in (mm)	RATED LIFT CAPACITY OVER FRONT BLADE DOWN lbs (kg)				RATED LIFT CAPACITY OVER FRONT BLADE UP lbs (kg)				RATED LIFT CAPACITY OVER SIDE BLADE UP lbs (kg)			
	MAX	8'3" (2500)	6'7" (2000)	MIN	MAX	8'3" (2500)	6'7" (2000)	MIN	MAX	8'3" (2500)	6'7" (2000)	MIN
6'7"(2000)	*661(300)	*650(295)	*650(295)		474(215)	*650(295)	*650(295)		441(200)	*650(295)	*639(290)	
4'11"(1500)	*672(305)	*683(310)	*783(355)		430(195)	*683(310)	*772(350)	*904(410)	386(175)	551(250)	*783(355)	*915(415)
3'3"(1000)	*672(305)	*805(365)	*1058(480)	*915(415)	408(185)	595(270)	827(375)	1036(470)	375(170)	551(250)	761(345)	948(430)
1'8"(500)	*683(310)	*904(410)	*1268(575)	*1378(625)	397(180)	584(265)	805(365)	992(450)	364(165)	540(245)	705(320)	860(390)
Ground(0)	*705(320)	*992(450)	*1157(525)	*1642(745)	408(185)	573(260)	772(350)	1157(525)	386(175)	518(235)	683(310)	1036(470)
-1'8"(-500)	*728(330)	*959(435)	*1323(600)	*1786(810)	441(200)	562(255)	761(345)		419(190)	518(235)	672(305)	
-3'3"(-1000)	*717(325)		*1124(510)		573(260)		783(355)		507(230)		705(320)	

Note : The maximum loads marked with an asterisk (*) were limited by the Excavator's hydraulic lifting capacity rather than by its static tilt load (tipping load) capacity.

STANDARD EQUIPMENT

- Blade
- Boom swing function
- Rubber tracks
- Variable undercarriage
- Auxiliary valve and piping (arm end)
- 2way control pattern change
- Cylinder cover (boom, blade)
- ROPS/FOPS Canopy
- Sliding seat
- Seat belt
- Traveling alarm
- Built-in type boom light
- Operation manual

(Please note that the standard equipment may vary from this list. Consult your Yanmar dealer for confirmation.)

YANMAR AMERICA CORP.

CONSTRUCTION EQUIPMENT DEPT.
101 International Parkway, Adairsville, GA 30103, U.S.A.
TEL:770-877-7570 FAX:770-877-7572
<http://www.yanmar.com>

Note : All information presented in this Brochure is subject to change without notice.

Printed in Japan
000060E2784③ 0612 0501⑧



YANMAR ViO Series
True Zero Tail Swing Excavator



ViO15-2A
Output: 11.9 hp (8.9 kW)
Operating weight: 3704 lbs (1680 kg)

YANMAR - YOUR BEST PARTNER FOR BUILDING THE FUTURE

TURNING

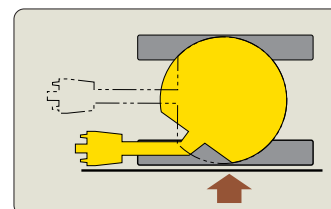
True Zero Tail Swing (at extended undercarriage)

The ViO development objective of turning within the machine width has been successfully achieved, while still maintaining the stability and work performance of a conventional style unit. The final hurdle has been cleared - you'll love the tight turning Global ViO.



The Safety and Comfort of True Zero Tail Swing (at extended undercarriage)

Common Zero Tail Models kept the overhang during turning to within just 10 percent of the crawler width. The Global ViO achieves the ultimate goal of no overhang at all. Since the counterweight and front corners never extend beyond the machine width, there is no concern even on jobs right up against a wall. It's safe, easy and smooth.



Up Against a Wall? No Problem

CONVENIENCE

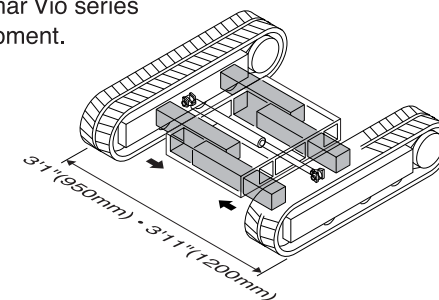
Strong in Tight Spaces with Variable Tracks

This is the mini 1.5-ton model suitable for work at the narrow access jobs. Variable tracks make it easier to enter and work inside those smaller sites. Reduce the width for entry, then expand it once again for stable operation!



Not your Common Variable Gauge! The Original Yanmar Slide

The Yanmar Vio 15-2A is designed for both slim-line entry and stable work. Dirt is forced from the pipes when the width is reduced, preventing dirt from gathering. In tight access areas or the wide-open spaces, you get highly efficient and reliable service from your Yanmar Vio series equipment.



Walk Through

The hydraulic control levers are carefully positioned to permit easy entry and exit to and from the work station.

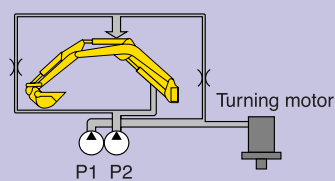


EFFICIENCY

Best Matching in the 1.5 ton Class! New High Performance Hydraulics

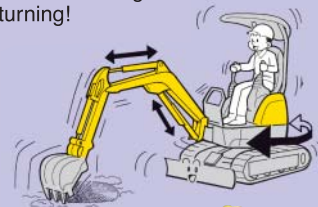
With Yanmar's 2-pump system, you get the equivalent performance of a 3-pump system. Even when moving the boom and arm while also turning, Yanmar's own newly developed 2-pump system glides smoothly through its motions. The superb multi function system make' ow stress operation.

Newly developed 2-pump system



The arm that doesn't go slow during compound operation!

Smooth even while using both the boom and arm during turning!



Integrated boom-light is protected from damage.



Easy servicing with steel rear hood.



Large opening rear hood for easier maintenance.



Removable side frame cover for easy maintenance.



Jointed outside of frame for easy maintenance.

Even Better Work Efficiency!

Productivity up 20% from previous Yanmar models. Fuel consumption for the same work hours down 10%.



OTHER EQUIPMENT

ROPS / FOPS Canopy with Seat Belt protects against Operator Injury.

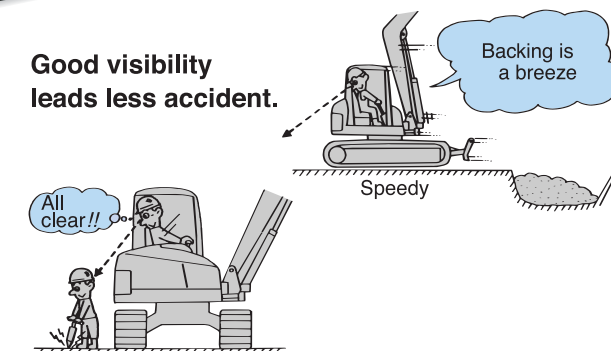


Tube shape 4-post canopy meets ISO/SAE ROPS/FOPS requirements.



Hydraulic hose installed inside the boom bracket for damage prevention. Superb hydraulic piping distribution for clear front visibility.

Good visibility leads less accident.



Large Comfortable Operating Space

The ViO15-2A offers lots of room for maximum comfort and productivity.



Spacious Work Station

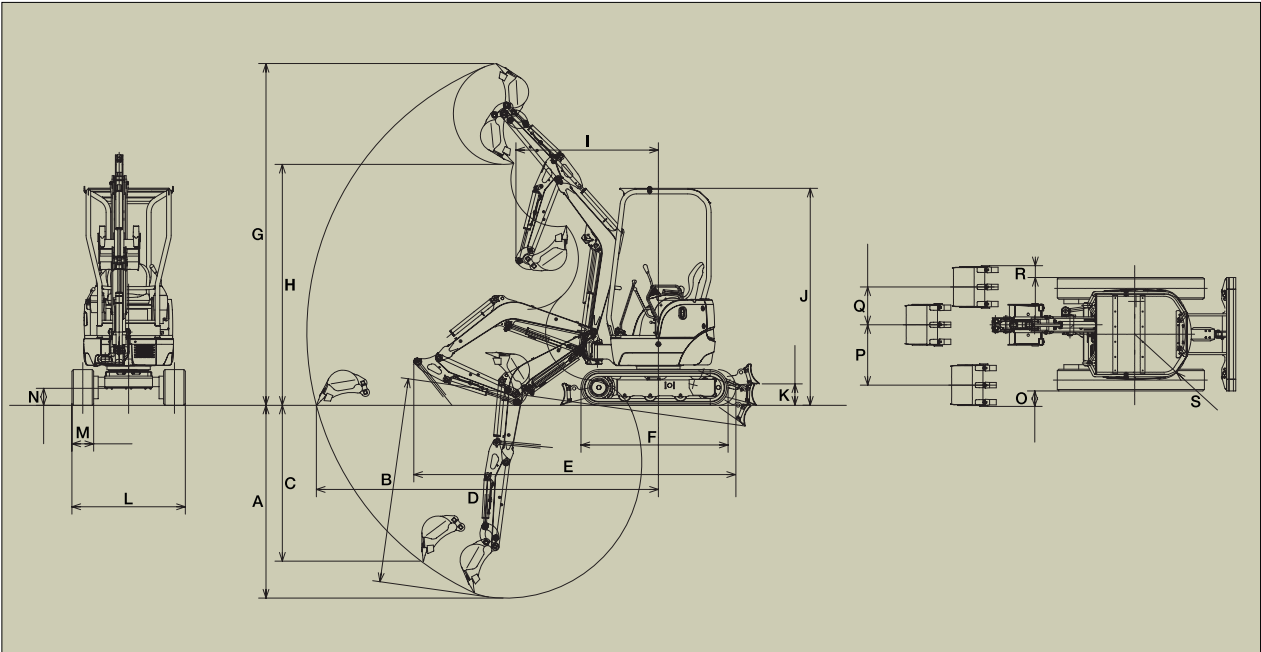
The widest operator space in its class and ergonomic layout minimize operator's fatigue.

Clean and Silent



An Environmental Engine Inside

Clean exhaust and powerful output. The people-friendly Yanmar C&S (Clean and Silent) engines are approved under the emissions and the noise regulations of the EU (Europe) and the EPA-TIER II (United States).



Dimensions										Units: ft-in (mm)
	A	B	C	D	E	F	G	H	I	J
ViO15-2A	6'11"(2100)	7'3"(2220)	5'9"(1750)	11'11"(3620)	11'2"(3410)	5'1"(1555)	11'11"(3620)	8'5"(2560)	4'11"(1500)	7'6"(2295)
	K	L	M	N	O	P	Q	R	S	
ViO15-2A	9"(225)	3'1"(950) 3'11"(1200)	9"(230)	7"(180)	11"(290) 6"(165)	2'1"(640)	1'4"(400)	10"(250) 5"(125)	2'(600)	

Specifications

Model		ViO15-2A
Type		Canopy
Operating weight	Rubber shoe lbs (kg)	3704 (1680)
Engine	Type	Water-cooled 3 cyl., diesel
	Model	3TNV70-WBV
	Output hp (kW)/RPM	11.9 (8.9) / 2000
Performance	Max. digging force, bucket / arm lbs (kN)	3080 (13.7) / 1980(8.8)
	Traveling speed MPH (km/h)	2.7 / 1.3 (4.3 / 2.1)
	Swing speed RPM	8.5
	Boom swing angle (L/R) degrees	42 / 65
Ground contact pressure	Rubber shoe PSI (kPa)	4.0 (27.3)
Hydraulic system	Pump capacity GPM	4.8 + 4.8 + 2.4
	(L/min)	(18.0 + 18.0 + 9.0)
	Main relief set pressure PSI (MPa)	2987 (20.6)
Undercarriage	Shoe type	Rubber
Blade dimensions	Width x height ft-in (mm)	3'11" / 3'1"x 9" (1200 / 950 x 235)
Fuel tank capacity	Gals (L)	5.3 (20)

Hydraulic P.T.O.

Model		ViO15-2A		
Specifications	Output	PSI(kPa)	GPM (L/min)	
			2000 RPM	1250 RPM
Combined flow, double actions		2697 (18600)	9.5 (36.0)	5.9 (22.5)